



## Solutions for Mechanical Design and Manufacturing

In business since 1982, Secant Technology, Inc. is one of the oldest and most experienced CAD solutions in the Mid-South. We offer the latest design and manufacturing solutions to make your design and manufacturing processes faster and more efficient.

Our decades of experience with the most widely used CAD packages makes Secant Technology the obvious choice for moving your company's 2D designs to fully interactive 3D models.

Together with our world-class training facility, our mobile training lab, and staff of engineers, you will realize the benefits of 3D design with SolidWorks CAD software almost immediately.

### Design Tools That Fit

Secant Technology represents the most widely used 3D CAD package on the market—SolidWorks CAD software.

SolidWorks Corporation is focused exclusively on the manufacturing industry. It's feature-rich product offerings cater to Mechanical Engineers who want to create better and more complex designs...in a shorter amount of time.

### Design Tools That Communicate

The most common problem we see with manufacturers is a lack of communication between companies, vendors, and suppliers. SolidWorks eDrawings allows you to communicate with virtually anyone, regardless of what CAD package they may use, even if they don't have any CAD software!

SolidWorks is also the most universal CAD software available. With it you can open from and save as more file types than any other CAD package on the market. No need to maintain multiple software licenses just to please everyone!

### Design Tools That Increase Productivity

No design team is effective without the proper training on the tools they use every day. Our certified and degreed staff has years of experience with the software we represent, along with in-the-field experience in manufacturing, so they know what you're asking and how to answer.

Our customers report a 20-30% increase in productivity after moving to SolidWorks CAD software, with designs that work.

### Design Tools That Validate

SolidWorks' own design validation software comes standard with every license, allowing you to test your designs before sending them to the shop floor. No more wasted time on multiple prototypes. No more wasted raw materials by overbuilding, and no more failures from underbuilding.

**Look inside for more details on SolidWorks products and training that can benefit you!**



7508 Highway 107  
Sherwood, AR 72120

Toll Free 877 329 1691  
Phone 501 835 6868

# Design Solutions from SolidWorks

## Fast, Efficient 3D Modeling — SolidWorks Standard



Work faster through unrivaled performance and ease-of-use, including familiar Windows® functions like drag-and-drop, point-and-click, and cut-and-paste. With

SolidWorks Standard software, design data is 100% editable, and relationships between parts, assemblies, and drawings always stay up-to-date.

**Design analysis:** Analyze design integrity easily with SimulationXpress, the only built-in analysis tool available for testing part designs quickly and easily within a 3D mechanical design system.

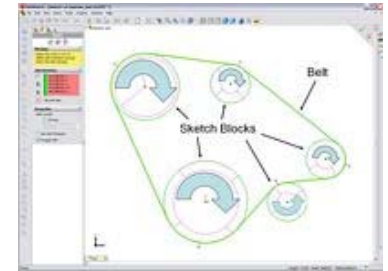
**Built-in industry-specific design tools:** Take advantage of a full range of unique mold design enhancements including the ability to create cores and cavities automatically. Benefit from a full set of weldment structure design and documentation tools offering unique flexibility and ease-of-use. Get best-in-class, fully associative sheet metal capabilities.

**2D-to-3D transition tools:** Create 3D models from existing 2D data with the best available transition tools, including help documentation for AutoCAD® users, the ability to drag 2D drawings into SolidWorks models, and view folding, a tool that lets you build 3D models more easily from DWG data.

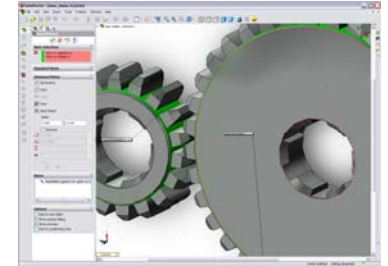
**Maintain Compatibility with ProE:** SolidWorks includes a feature-based converter for Pro/ENGINEER files. The SolidWorks Pro/E Converter recognizes most features in parts and assemblies created with Pro/ENGINEER versions 17.0 - 20.0.

**Configuration Management:** Configuration Management is a unique part of the SolidWorks software architecture that allows you to create a family of parts or assemblies, and control individual dimensions and positioning of each part or assembly.

**Motion:** Simulate true motion and mechanical



Sketch Blocks



Gear Mate

## SolidWorks Professional — The Complete 3D CAD Solution



Barry Waymiller

**Introducing SolidWorks Professional.** The complete 3D CAD solution that provides you with all the 3D design tools you need in one all-inclusive package.

**CAD Productivity Tools.** Reduce design steps with SolidWorks CAD Productivity tools such as:

**SolidWorks product data management:** Control CAD file revisions and manage all project data more efficiently with SolidWorks product data management software.

**SolidWorks Toolbox:** a time saving library of standard parts providing automated assembly through SolidWorks smart fastener technology.

**SolidWorks Utilities:** compare geometry and features between parts, find the differences in documents and identify problems with imported

geometry.

**FeatureWorks:** recognize features from existing 3D models and convert them to fully editable, associative and parametric models.

**SolidWorks eDrawings Professional:** an email-enabled communication tool that dramatically eases the review of 2D and 3D design information.

**3D Instant Website:** is an easy-to-use tool for publishing live websites with 3D interactive content.

**PhotoWorks:** rendering software for creating photorealistic images.

**SolidWorks Animator:** animation software for creating compelling AVI files from SolidWorks parts and assemblies.

## SolidWorks Premium— 3D Modeling, Assembly Analysis, Wire Harness, Tubing and Piping

**Introducing SolidWorks Premium.** The complete 3D product design solution, providing your product design team with all the mechanical design, verification, motion simulation, data management, and communication tools that they need in one package. It includes:

**SolidWorks Professional:** a complete 3D CAD product providing you and your product design team with all the mechanical design and data management tools you need in one package.

**SolidWorks Simulation:** an easy-to-use simulation tool that helps you test design quality with powerful stress, strain, and displacement analysis capabilities for both parts and assemblies.

**SolidWorks Routing:** an add-on component that simplifies the design of all types of piping, tubing, and electrical cabling systems and generates cable and harness manufacturing documentation automatically.



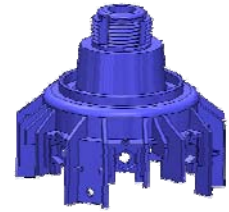
Routing Parts

# Training from Secant Technology

## SolidWorks Essentials (4 Days)

Starting from scratch and want to get into a simple 3D solution? This is an excellent introduction to SolidWorks, giving the student the skills and knowledge necessary to make full use of SolidWorks' power to model and annotate real products.

Whether you are a part of designing or manufacturing, this training regimen will carry you from part modeling to assemblies and finish off with a complete industry standard drawing. Important concepts to be covered during this course involve the following: design intent, part modeling fundamentals, assembly constraints,



## Advanced Part Modeling (2 Days)



Advanced Part Modeling is for those users who desire to achieve a more in-depth understanding of SolidWorks power by implementing more advanced features and exploring more operations. This advanced training provides a user with impressive new productive capabilities for increased productivity.

This module is the next step after completing the SolidWorks Essentials. Users discover advanced modeling techniques which allow shapes with lofting sweeping, thread modeling, blended fillets, and surface features. Additionally, this course covers part and design editing and troubleshooting methodologies. SolidWorks 2008 offers countless exciting new enhancements in this module of training!

## Advanced Assembly Modeling (2 Days)

Advanced Assembly Modeling is for those users who desire to achieve a more in-depth understanding of SolidWorks power by implementing more advanced features of assemblies and exploring more operations. This two day course complements the SolidWorks Advanced Modeling course.

Once both SolidWorks Level I & Advanced Part Modeling training, or equivalent prior experience, have been achieved, users get to explore assemblies in much more depth enabling them to create functional and easily adaptable assemblies. This course covers creating part models in the context of the assembly, breaking associations with external references, interference detection, replacing and patterning components, creating assembly configurations and much more.



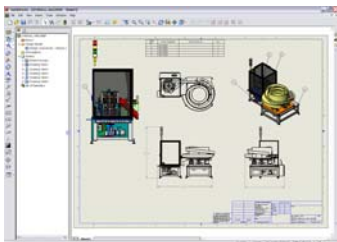
## Sheet Metal (1 Day)

Since sheet metal functionality is **standard** with every seat of SolidWorks, why not model them and quickly generate 2D flat pattern drawings? SolidWorks Sheet Metal uses mechanical design automation software. Building standalone sheet metal parts, converting parts to sheet metal, and modeling sheet metal parts in the context of an assembly are covered.

## Weldments (1 Day)

The SolidWorks Weldments course teaches you how to create welded structures with standard structural members. Managing a cut list becomes a snap with SolidWorks Weldments. Learn how to work with profile sketches, add custom properties, and generate Weldment drawings.

## Drawings (1 Day)



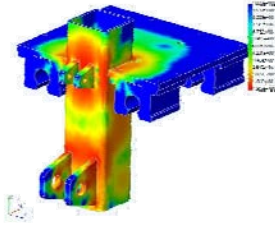
The SolidWorks Weldments course teaches you how to create welded structures with standard structural members. Managing a cut list becomes a snap with SolidWorks Weldments. Learn how to work with profile sketches, add custom properties, and generate Weldment drawings. Weld beads are also covered.

## Other Training Offerings

SolidWorks Advanced Surface Modeling	2 days
SolidWorks Piping, Tubing, & Electrical Routing	2 days
SolidWorks Mold Design	1 day
SolidWorks Drawings	1 day
SolidWorks Customized On-site Training	

# Design Validation Solutions

## SolidWorks SimulationXpress

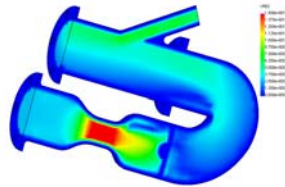


### Free design verification with no upfront costs

Gain insight into how your SolidWorks design will function with the point-and-click stress analysis wizard built into every SolidWorks 3D modeling software package. For designers with no previous virtual simulation experience, SolidWorks SimulationXpress guides you step-by-step through the design analysis process - allowing you to explore the benefits of first-pass design checks without any cost.

### Basic testing capabilities for SolidWorks parts

SolidWorks SimulationXpress offers design verification and validation functionality. It provides the ability to run stress analysis of simple parts and simulates the effect of force, pressure, and motion loads from SolidWorks physical simulation on those parts. Once you have your stress results, SolidWorks SimulationXpress allows you to generate HTML reports and create SolidWorks eDrawings to document and communicate the results.



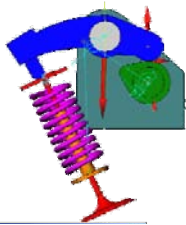
## SolidWorks Simulation

### Affordable design validation tool for every engineer's desktop

Specifically tailored for designers and engineers who are not specialists in design validation, SolidWorks Simulation helps improve product quality by indicating how SolidWorks models will behave before they are built. Go beyond simple hand calculations by verifying your intuitions and study the real-world performance of different design alternatives without ever leaving the SolidWorks window.

### Easy to learn and use for immediate productivity

Fully embedded inside the SolidWorks interface, SolidWorks Simulation utilizes the SolidWorks FeatureManager and many of the same mouse and keyboard commands, so anyone who can design a part in SolidWorks can analyze it without having to learn a new interface. SolidWorks Simulation contains the most frequently used design validation tools, offering stress, strain, and displacement analysis capabilities for both parts and assemblies at a very affordable price.



## SolidWorks Simulation Professional

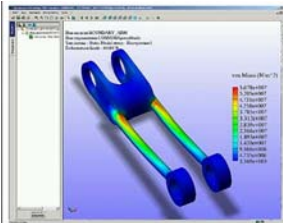
### Powerful analysis for engineering professionals

SolidWorks Simulation Professional offers a wide spectrum of powerful tools to help engineers who are familiar with analysis concepts to perform virtual testing and analysis of parts and assemblies. Engineers who need more specific analysis capabilities can use SolidWorks Simulation Professional to predict the physical behavior of practically any part or assembly under any loading condition.

### Intelligent analysis so you can work smarter, not harder

In addition to the analysis capabilities included inside SolidWorks Simulation, SolidWorks Simulation Professional offers drop test, optimization, thermal heat transfer, thermal stress, vibration, fatigue, and buckling analysis.

Regardless of industry application, SolidWorks Simulation provides significant product quality benefits, enabling engineers to detect design problems in less time than a prototype could be built.



## SolidWorks Simulation Premium

### High-end analysis tools without the high-end price

One of the most comprehensive and sophisticated packages available, SolidWorks Simulation Premium offers seasoned analysts a tremendous range of analysis capabilities at a fraction of the cost of most high-end FEA programs.

A powerful tool that delivers reliable results quickly. Backed by over 20 years of FEA expertise and technological innovations, SolidWorks Simulation Premium offers the high-end analysis you need to get the job done.

### Serious FEA for serious users

For tough engineering problems like advanced dynamics and nonlinear simulation, you need a

